



When Buying From Deso, You Are Buying More Than Products, You Are Buying Quality And Service

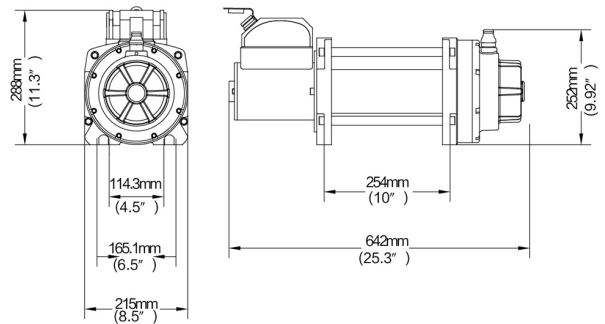
HEAVY DUTY WINCH SERIES(DST12500)

FEATURES:

- Sealed Winch Body And Anti-High Temperature Silver Contacts, 450A Sealed Contactor
- All Components Meet European Safety Regulation 50% Overload Test
- Chrome Plated Aluminium Ergonomic Free Spool Knob Lifts And Turns Effortlessly. Easily Rotate in 45 Degree Gearbox design Allows Winch Mounted On Vehicle Bumper
- Two Types Control Boxes Provide Different Appearance And Multiple Mounting Demands
- Meet SAEJ706 Standard And With CE Approved

PARAMETER:

- Single Line Rated Pull: 12500LBS(5675KG)
- Motor(Series Wound): 5.6HP/4.2KW(12V DC)
6.8HP/5KW(24V DC)
- Gear Train: 4 Stage Planetary Gear
- Gear Ratio: 516:1
- Clutch: Rotating Ring Gear
- Braking Action: Mechanical Automatic Load Holding
- Fairlead: 4-Way Roller Fairlead
- Wire Rope: 12/32"×95' (Φ 10.3MM×29M)
- Drum Size: 3.46"×8.66" (88MM×220MM)
- Dimension: 25.3"×8.46"×11.34" (642MM×215MM×288MM)
- Bolt Pattern: 10"×4.5" (254MM×114.3MM)
- New Weight(Wire Rope Included): 150LBS(68KG)



LINE SPEED AND MOTOR CURRENT(FIRST LAYER)

12V DC

Line Pull		Line Speed		Motor Current (AMPS)
KG	LBS	MPM	FPM	
0	0	4.9	16.1	70
2724	6000	2.6	8.5	150
3632	8000	2.0	6.6	240
4540	10000	1.5	4.9	290
5675	12500	1.2	3.9	320

24V DC

Line Pull		Line Speed		Motor Current (AMPS)
KG	LBS	MPM	FPM	
0	0	4.0	13.1	50
1916	4000	2.4	7.9	90
3632	8000	2.0	6.6	130
4540	10000	1.6	5.2	160
5675	12500	1.3	4.3	200

LINE PULL AND CABLE CAPACITY

Layer Of Cable	Rated Line Pull Per Layer		Cable Capacity Per Layer	
	KG	LBS	M	FT
1	5675	12500	6.4	21.0
2	4495	9900	14.3	46.9
3	3814	8400	23.5	77.1
4	3314	7300	29	95



When Buying From Deso, You Are Buying More Than Products, You Are Buying Quality And Service

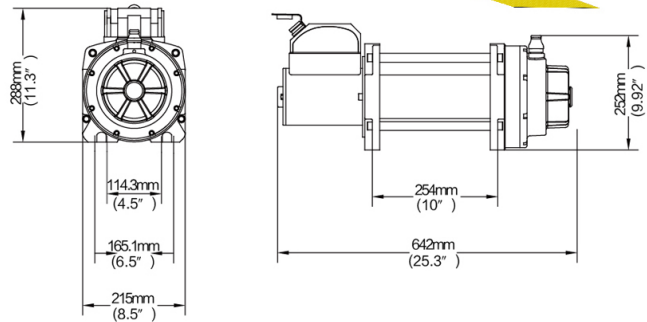
HEAVY DUTY WINCH SERIES(DST15000)

FEATURES:

- Sealed Winch Body And Anti-High Temperature Silver Contacts, 450A Sealed Contactor
- All Components Meet European Safety Regulation 50% Overload Test
- Chrome Plated Aluminium Ergonomic Free Spool Knob Lifts And Turns Effortlessly. Easily Rotate in 45 Degree Gearbox design Allows Winch Mounted On Vehicle Bumper
- Two Types Control Boxes Provide Different Appearance And Multiple Mounting Demands
- Meet SAEJ706 Standard And With CE Approved

PARAMETER:

- Single Line Rated Pull: 15000LBS(6810KG)
- Motor(Series Wound): 7.2HP/5.4KW(12V DC)
8.2HP/6KW(24V DC)
- Gear Train: 4 Stage Planetary Gear
- Gear Ratio: 516:1
- Clutch: Rotating Ring Gear
- Braking Action: Mechanical Automatic Load Holding
- Fairlead: 4-Way Roller Fairlead
- Wire Rope: 29/64"×92' (Φ 11.5MM×28M)
- Drum Size: 3.46"×8.66" (88MM×220MM)
- Dimension: 25.3"×8.46"×11.34" (642MM×215MM×288MM)
- Bolt Pattern: 10"×4.5" (254MM×114.3MM)
- New Weight(Wire Rope Included): 154LBS(70KG)



LINE SPEED AND MOTOR CURRENT(FIRST LAYER)

12V DC

Line Pull		Line Speed		Motor Current (AMPS)
KG	LBS	MPM	FPM	
0	0	4.8	11.6	70
1816	4000	2.7	8.9	150
3632	8000	1.8	5.9	240
5448	12000	1.4	4.6	320
6810	15000	1.0	3.3	350

24V DC

Line Pull		Line Speed		Motor Current (AMPS)
KG	LBS	MPM	FPM	
0	0	3.0	9.8	50
1816	4000	2.4	7.9	90
3632	8000	2.0	6.6	130
5448	12000	1.4	4.6	160
6810	15000	1.2	3.9	200

LINE PULL AND CABLE CAPACITY

Layer Of Cable	Rated Line Pull Per Layer		Cable Capacity Per Layer	
	KG	LBS	M	FT
1	6810	15000	5.9	19.4
2	5448	12000	13.2	43.3
3	4540	10000	21.9	71.9
4	3995	8800	28	92



When Buying From Deso, You Are Buying More Than Products, You Are Buying Quality And Service

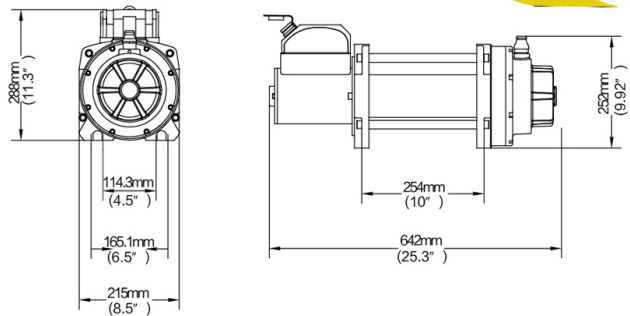
HEAVY DUTY WINCH SERIES(DST18000)

FEATURES:

- Sealed Winch Body And Anti-High Temperature Silver Contacts, 450A Sealed Contactor
- All Components Meet European Safety Regulation 50% Overload Test
- Chrome Plated Aluminium Ergonomic Free Spool Knob Lifts And Turns Effortlessly. Easily Rotate in 45 Degree Gearbox design Allows Winch Mounted On Vehicle Bumper
- Two Types Control Boxes Provide Different Appearance And Multiple Mounting Demands
- Meet SAEJ706 Standard And With CE Approved

PARAMETER:

- Single Line Rated Pull: 18000LBS(8172KG)
- Motor(Series Wound): 7.3HP/5.5KW(12V DC)
8.2HP/6KW(24V DC)
- Gear Train: 4 Stage Planetary Gear
- Gear Ratio: 516:1
- Clutch: Rotating Ring Gear
- Braking Action: Mechanical Automatic Load Holding
- Fairlead: 4-Way Roller Fairlead
- Wire Rope: 1/2"×85.3'(Φ 13MM×26M)
- Drum Size: 3.46"×8.66"(88MM×220MM)
- Dimension: 25.3"×8.46"×11.34"(642MM×215MM×288MM)
- Bolt Pattern: 10"×6.5"(254MM×165.1MM)
- New Weight(Wire Rope Included): 158LBS(72KG)



LINE SPEED AND MOTOR CURRENT(FIRST LAYER)

12V DC

Line Pull		Line Speed		Motor Current (AMPS)
KG	LBS	MPM	FPM	
0	0	3.3	10.8	70
1816	4000	2.7	8.9	150
3632	8000	1.6	5.2	240
5448	12000	1.0	3.3	320
8172	18000	0.8	2.6	420

24V DC

Line Pull		Line Speed		Motor Current (AMPS)
KG	LBS	MPM	FPM	
0	0	3.0	9.8	50
1816	4000	2.4	7.9	90
3632	8000	2.0	6.6	130
5448	12000	1.0	3.3	160
8172	18000	0.8	2.6	230

LINE PULL AND CABLE CAPACITY

Layer Of Cable	Rated Line Pull Per Layer		Cable Capacity Per Layer	
	KG	LBS	M	FT
1	8172	18000	5.4	17.7
2	6356	14000	12.2	40
3	4994	11000	20.3	66.5
4	4540	10000	26	85.3